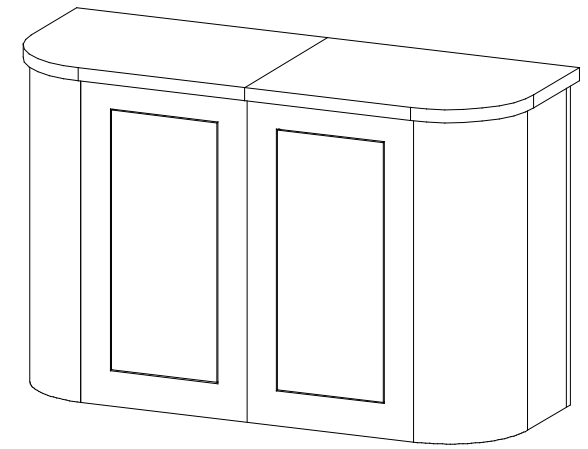
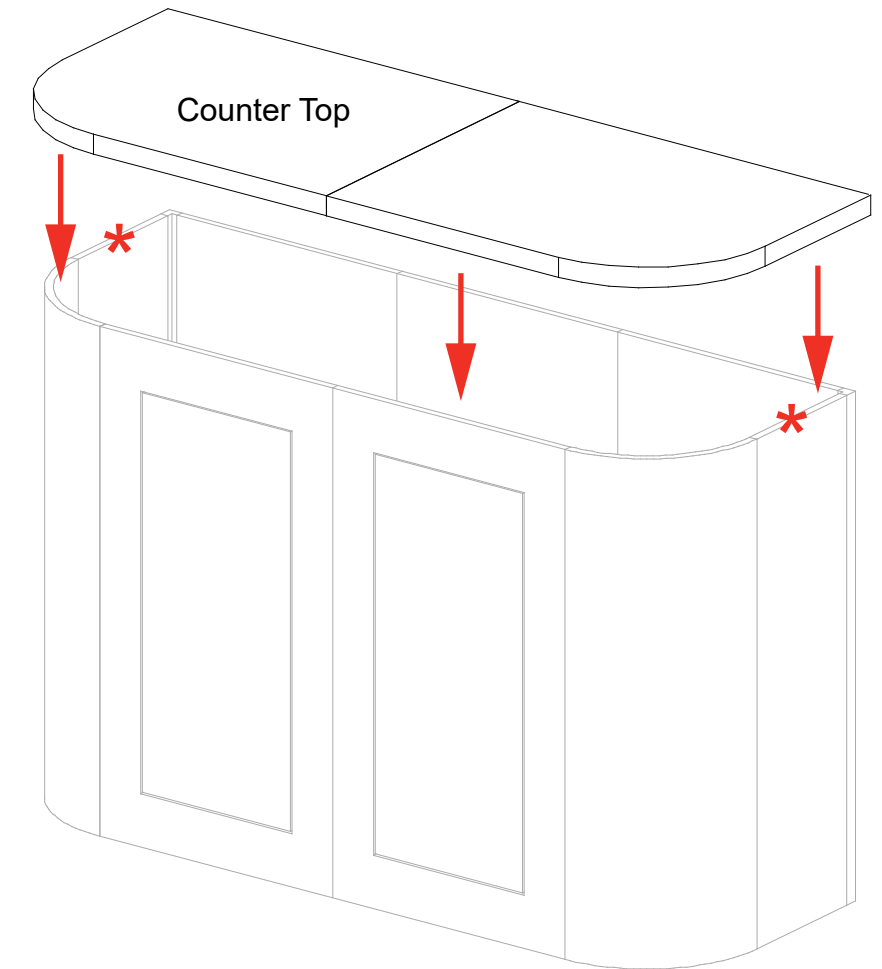
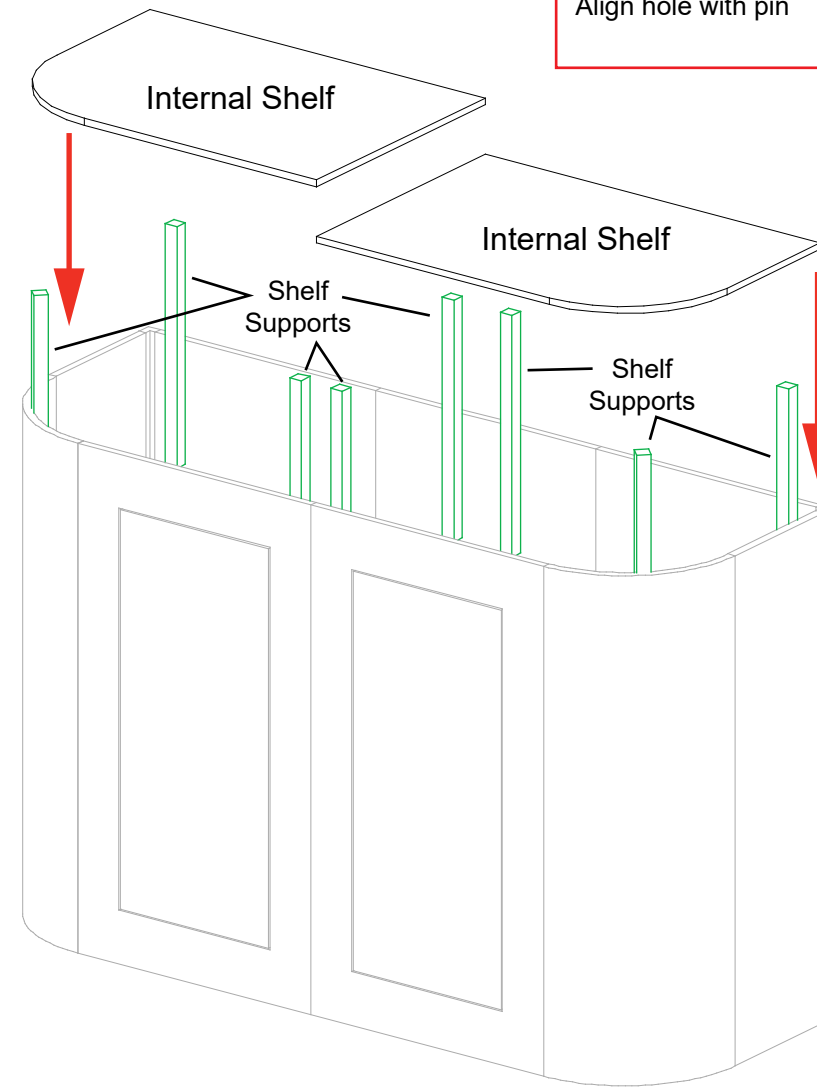
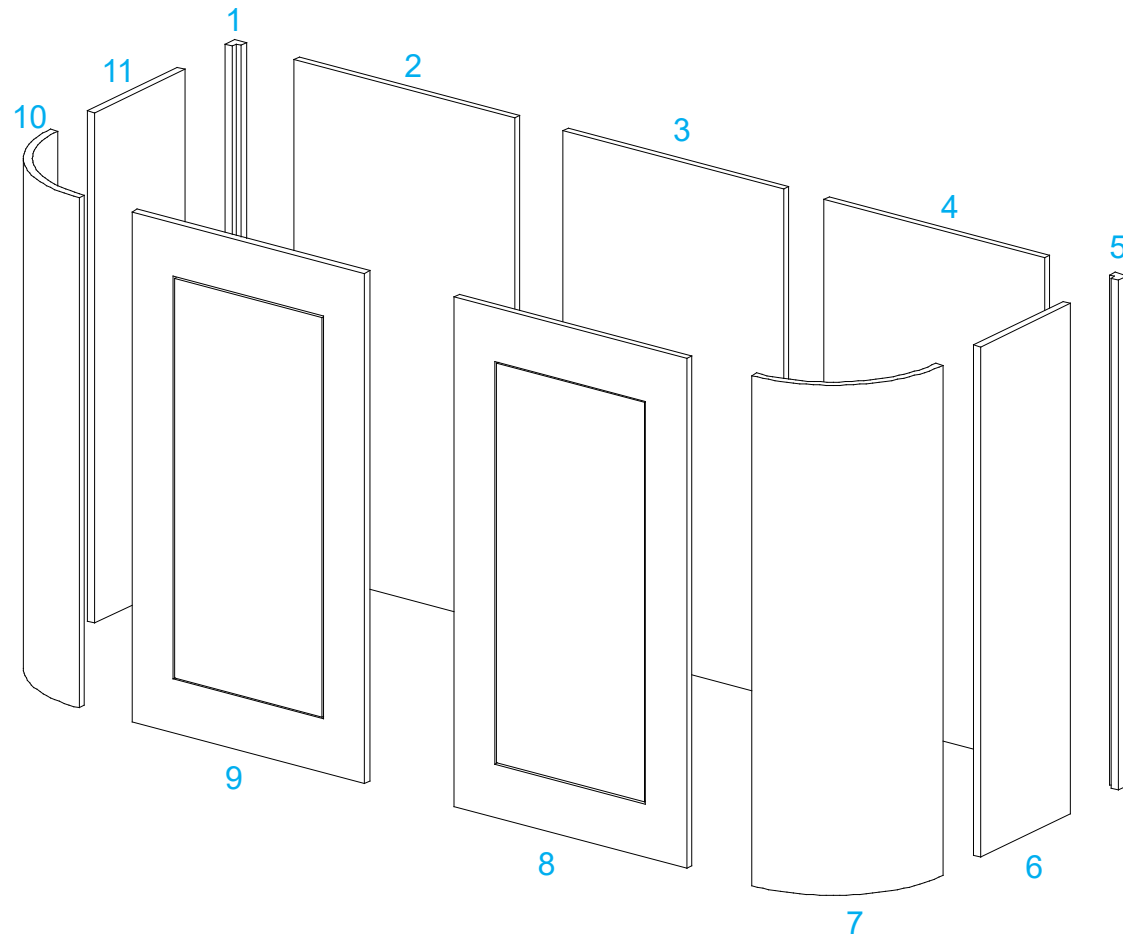
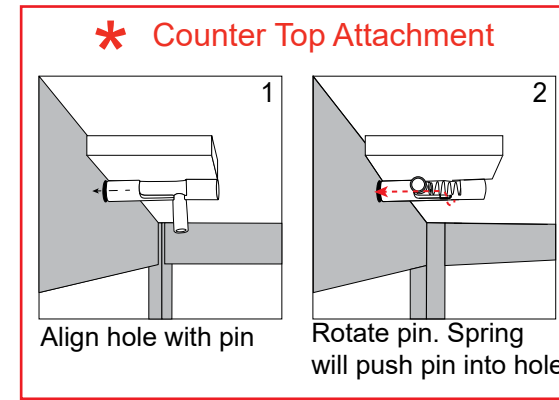


Item	Qty.	Description
1	1	38"h 90° LT-Connector
2	1	19"w LT-Panel
3	1	19"w LT-Panel
4	1	19"w LT-Panel
5	1	38"h 90° LT-Connector
6	1	10.5"w LT-Panel
7	1	Curved LT-Panel
8	1	20.063"w LT-Door Panel
9	1	20.063"w LT-Door Panel
10	1	Curved LT-Panel
11	1	10.5"w LT-Panel

- Steps:
- 1) Assemble LT-Panels and Connectors in numerical order.
 - 2) Install Shelf support to velcro on interior of assembled cabinet; place two piece internal shelf on supports
 - 3) Attach Counter Top to top of assembled cabinet.



Completed Assembly



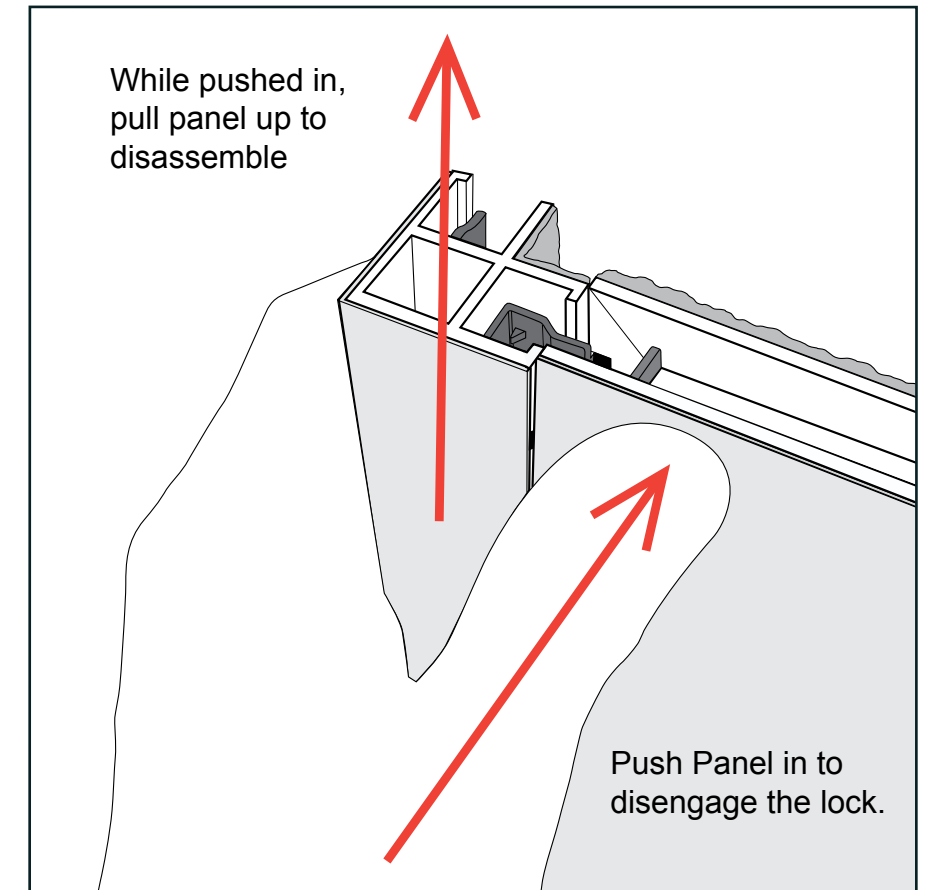
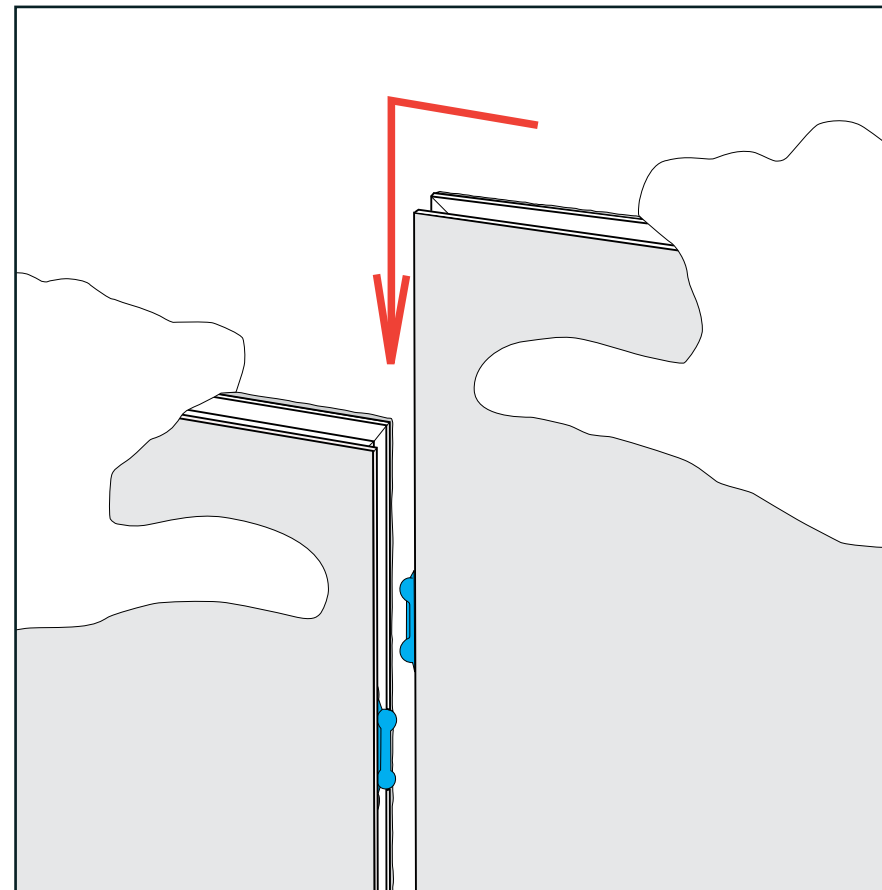
SETUP INSTRUCTIONS

LT Panel Assembly

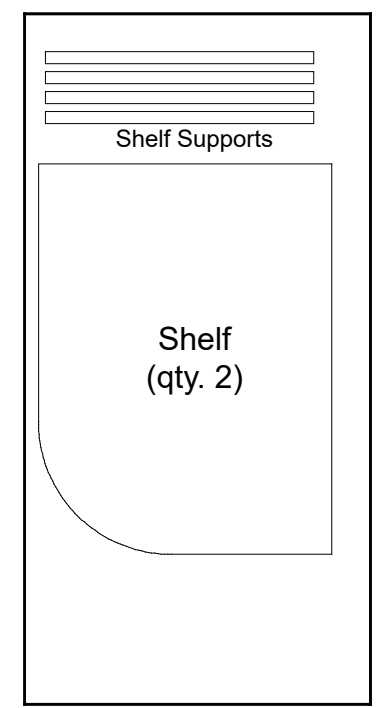
- 1) With a vertical offset, place LT-Panels side-by-side; slide vertically offset panel down to lock panels together and in place.
- 2) Corner Connectors (90°, T-Connector, Straight Connector) connect just as panels connect together. Repeat Step 1 for installing corner connectors to panels.

LT Panel Disassembly

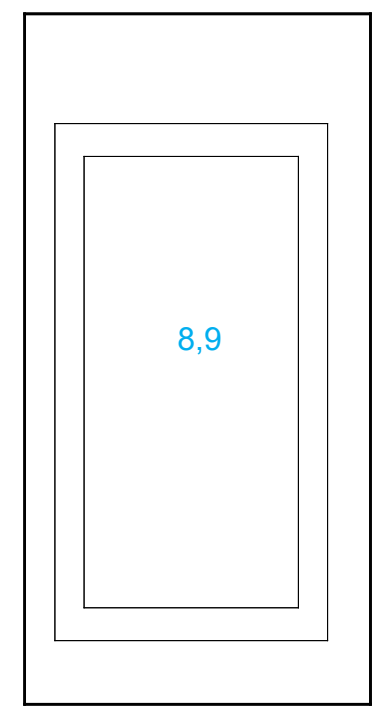
- 1) To disassemble push panel with upper locks horizontally to disengage top lock clip.
- 2) Slide panels or connectors vertically in opposing directions to release latches and disconnect parts.



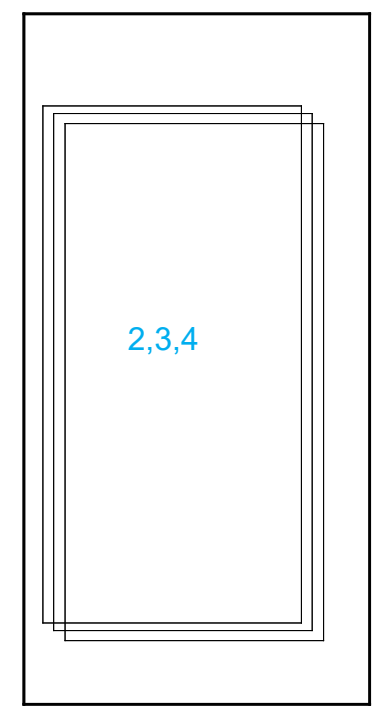
Top View of Each Level



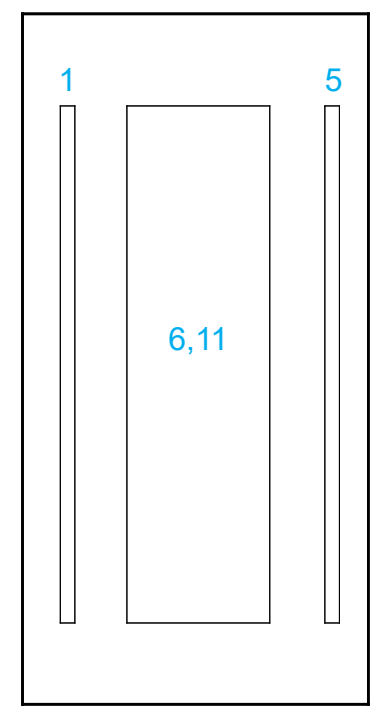
Level 1
(Bottom level)



Level 2



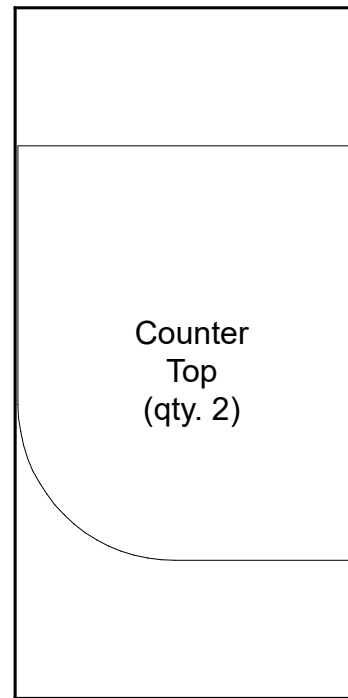
Level 3



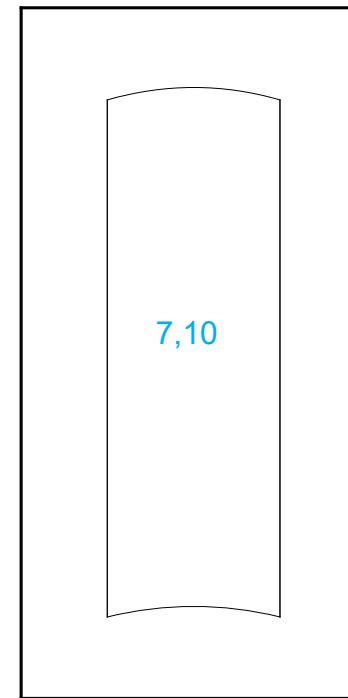
Level 4

Key

Top View of Each Level



Level 1
(Bottom level)



Level 2